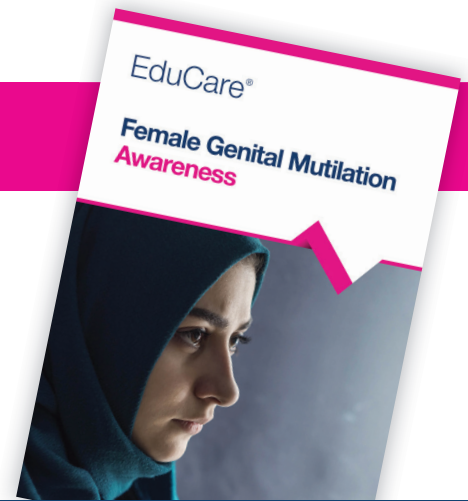


Female Genital Mutilation Awareness

This course provides a thorough guide to help those working with children and young people understand what Female Genital Mutilation (FGM) is and spot the signs that it has taken place, or may take place. It will help people understand the risks and consequences of FGM, and how to act if they suspect a girl is in danger.



Key features

- Level 2 course (as graded against the nationally accepted levels, equivalent to GCSE grades A* - C)
- One module with a multiple-choice questionnaire
- One CPD credit*
- Optional narration of the course module and questionnaire for accessibility
- Personalised downloadable certificate
- 70% pass mark
- Printable module for future reference

*1 CPD credit equals up to 1 hour of learning

Course content

The purpose of the course is to help you:

- understand what FGM is, and the motives for performing it
- know the four different types of FGM, as classified by the World Health Organisation
- learn about the different names for FGM as well as resources that list the names for FGM in different languages
- learn about the prevalence of FGM in England and abroad, as well as important statistics and figures as reported by UNICEF
- understand both the short and long-term consequences of FGM
- learn about the risk factors of FGM, as well as the signs that FGM may have taken place
- learn about the different laws that are in place to protect girls from FGM, including FGM Protection Orders
- understand what the Mandatory Reporting Duty is and who it applies to
- recognise the roles and responsibilities of professionals, including the importance of working together to safeguard children
- learn about guidance on what you should do if you suspect FGM has taken place or may take place.

This course is suitable for

Anyone who comes into contact with girls up to the age of 18.

Key features

- Visually engaging and highly interactive
- Videos to highlight key learning points
- Scenarios to help you spot the signs of FGM taking place
- Answer explanations for those who achieve the questionnaire pass mark
- Additional resources to expand learning.

Pricing options

1. Standalone course cost: £9.50 excl. VAT* (buy online today at www.educare.co.uk) *Discounts apply for multiple purchases.
2. Buy as one of our EduCare for Education multi-course licences for educational establishments. For further information, please call 01926 436212 to discuss purchase options and licences.



Contents

Prevalence in England

FGM is a hidden crime so its prevalence is difficult to estimate.

However, there were **5,391** newly recorded cases of FGM reported in England during 2016 - 2017.

In **57** cases, the FGM was known to have been performed in the UK. Where the nature of the UK procedures was known, around 50 were genital piercings.

Girls between the age of **5 to 9** years was the most common age range at which FGM was undertaken. *

You have now finished this section, click the 'Home' button to return to the main menu.

A screenshot of the course interface showing the 'Prevalence in England' section. It includes text about the number of cases, a map of the UK, and a video thumbnail. A navigation bar at the bottom has a home icon and a back arrow.

Question 4

Drag and drop

FGM is a [] where the female genital [] are injured or [] and there is [] reason for this. It is frequently a very traumatic and [] act and can cause physical and psychological harm in many ways.

changed operation no medical enhanced organs procedure medical violent

A screenshot of a drag-and-drop question. The text describes FGM and asks the user to complete the sentence using words from a list: changed, operation, no medical, enhanced, organs, procedure, medical, violent. A video thumbnail shows a woman looking distressed. A progress bar at the top shows 10 questions, with the current one highlighted.

Contents

Other risk factors

Other potential risk factors include:

a female child has an older sibling or cousin who has undergone FGM

1 2 3 4 5 6 7 8 9 10 11 12 13 14 15 16 17 18

Move the slider to view each of the 18 points.

A screenshot of the 'Other risk factors' section. It features a progress slider with 18 points, currently at point 8. Below the slider is a video thumbnail showing a dog in a crowd. A navigation bar at the bottom has a home icon and a back arrow.

Why choose us?



“ EduCare allows us to have control over our staff training from an educational and financial point. It has far exceeded our expectations in that all our staff have been able to complete child protection training, health and safety and food hygiene for a financial outlay that has suited our small school perfectly. ”

Johanna Staunton
Head Teacher, Laleham Lea School

- www.educare.co.uk
- 01926 436 211
- online@educare.co.uk

